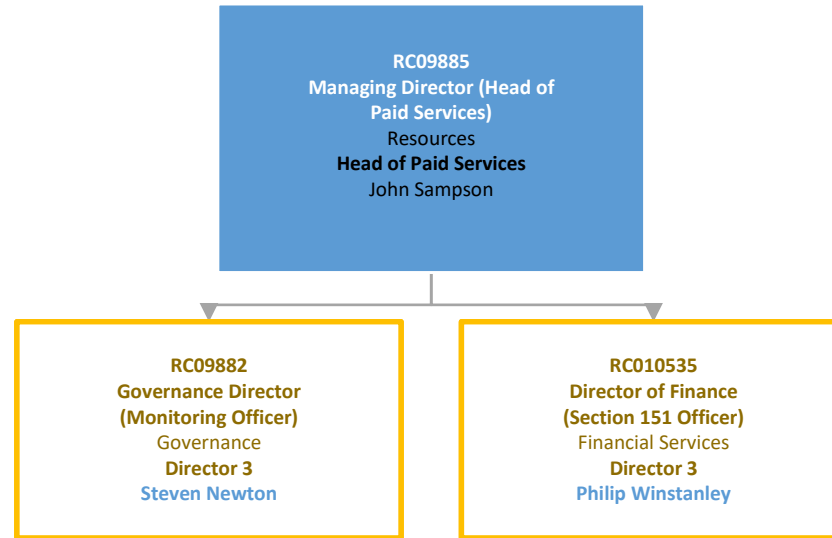


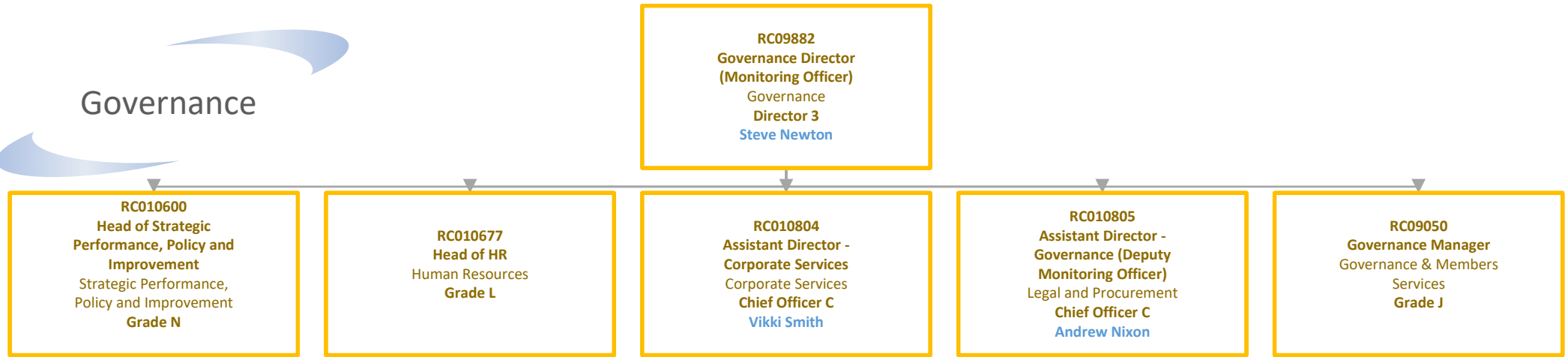
Pay Grades & Salaries 2024-25			
T&C's	Grade	Salary From	Salary To
JNC	Head of Paid Services	£ 151,408.00	£ 151,408.00
	Director 1	£ 139,111.00	£ 139,111.00
	Director 3	£ 119,635.00	£ 119,635.00
	Chief Officer B	£ 92,663.00	£ 92,663.00
	Chief Officer C	£ 83,601.00	£ 83,601.00
NJC	Grade N	£ 77,624.00	£ 80,692.00
	Grade L	£ 64,059.00	£ 66,568.00
	Grade K	£ 58,216.00	£ 60,478.00
	Grade J+	£ 54,977.00	£ 57,117.00
	Grade J	£ 52,805.00	£ 54,977.00
	Grade I+	£ 49,764.00	£ 51,802.00

# Resources

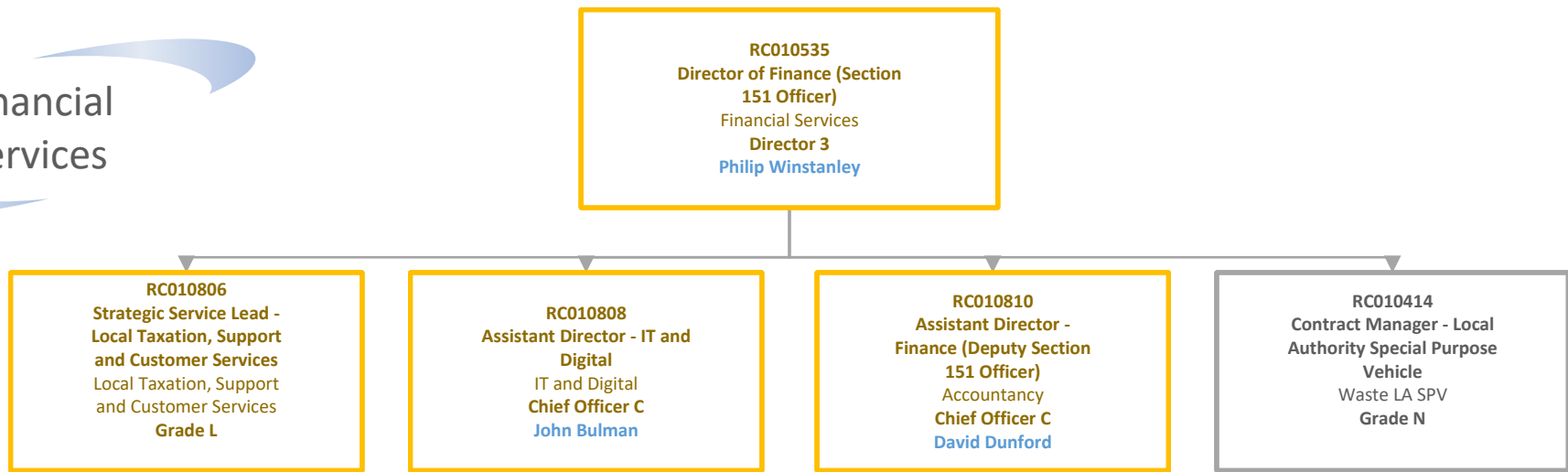


<u>Pay Grades &amp; Salaries 2024-25</u>			
T&C's	Grade	Salary From	Salary To
JNC	Head of Paid Services	£ 151,408.00	£ 151,408.00
	Director 1	£ 139,111.00	£ 139,111.00
	Director 3	£ 119,635.00	£ 119,635.00
	Chief Officer B	£ 92,663.00	£ 92,663.00
	Chief Officer C	£ 83,601.00	£ 83,601.00
NJC	Grade N	£ 77,624.00	£ 80,692.00
	Grade L	£ 64,059.00	£ 66,568.00
	Grade K	£ 58,216.00	£ 60,478.00
	Grade J+	£ 54,977.00	£ 57,117.00
	Grade J	£ 52,805.00	£ 54,977.00
	Grade I+	£ 49,764.00	£ 51,802.00

# Governance

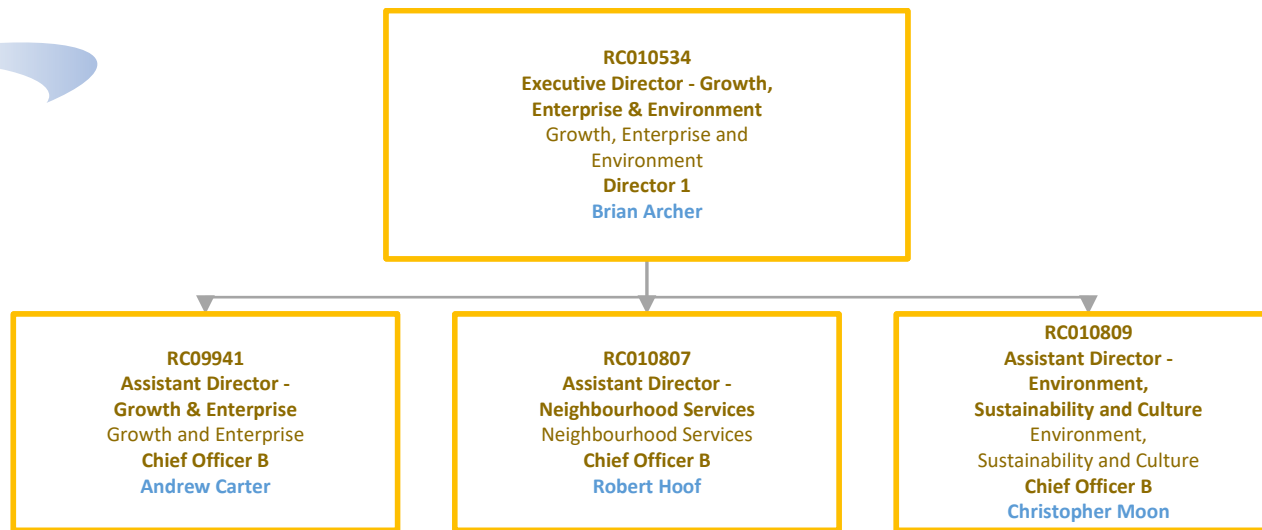


Pay Grades & Salaries 2024-25			
T&C's	Grade	Salary From	Salary To
JNC	Head of Paid Services	£ 151,408.00	£ 151,408.00
	Director 1	£ 139,111.00	£ 139,111.00
	Director 3	£ 119,635.00	£ 119,635.00
	Chief Officer B	£ 92,663.00	£ 92,663.00
	Chief Officer C	£ 83,601.00	£ 83,601.00
NJC	Grade N	£ 77,624.00	£ 80,692.00
	Grade L	£ 64,059.00	£ 66,568.00
	Grade K	£ 58,216.00	£ 60,478.00
	Grade J+	£ 54,977.00	£ 57,117.00
	Grade J	£ 52,805.00	£ 54,977.00
	Grade I+	£ 49,764.00	£ 51,802.00



<u>Pay Grades &amp; Salaries 2024-25</u>			
T&C's	Grade	Salary From	Salary To
JNC	Head of Paid Services	£ 151,408.00	£ 151,408.00
	Director 1	£ 139,111.00	£ 139,111.00
	Director 3	£ 119,635.00	£ 119,635.00
	Chief Officer B	£ 92,663.00	£ 92,663.00
	Chief Officer C	£ 83,601.00	£ 83,601.00
NJC	Grade N	£ 77,624.00	£ 80,692.00
	Grade L	£ 64,059.00	£ 66,568.00
	Grade K	£ 58,216.00	£ 60,478.00
	Grade J+	£ 54,977.00	£ 57,117.00
	Grade J	£ 52,805.00	£ 54,977.00
	Grade I+	£ 49,764.00	£ 51,802.00

Growth,  
Enterprise and  
Environment

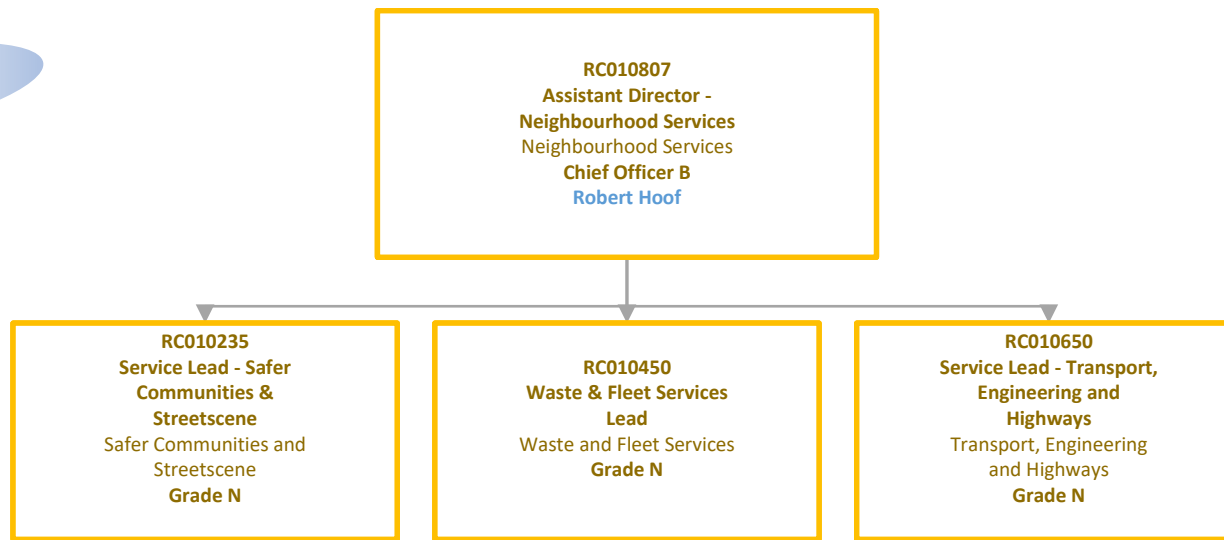


<u>Pay Grades &amp; Salaries 2024-25</u>			
T&C's	Grade	Salary From	Salary To
JNC	Head of Paid Services	£ 151,408.00	£ 151,408.00
	Director 1	£ 139,111.00	£ 139,111.00
	Director 3	£ 119,635.00	£ 119,635.00
	Chief Officer B	£ 92,663.00	£ 92,663.00
	Chief Officer C	£ 83,601.00	£ 83,601.00
NJC	Grade N	£ 77,624.00	£ 80,692.00
	Grade L	£ 64,059.00	£ 66,568.00
	Grade K	£ 58,216.00	£ 60,478.00
	Grade J+	£ 54,977.00	£ 57,117.00
	Grade J	£ 52,805.00	£ 54,977.00
	Grade I+	£ 49,764.00	£ 51,802.00

# Growth and Enterprise

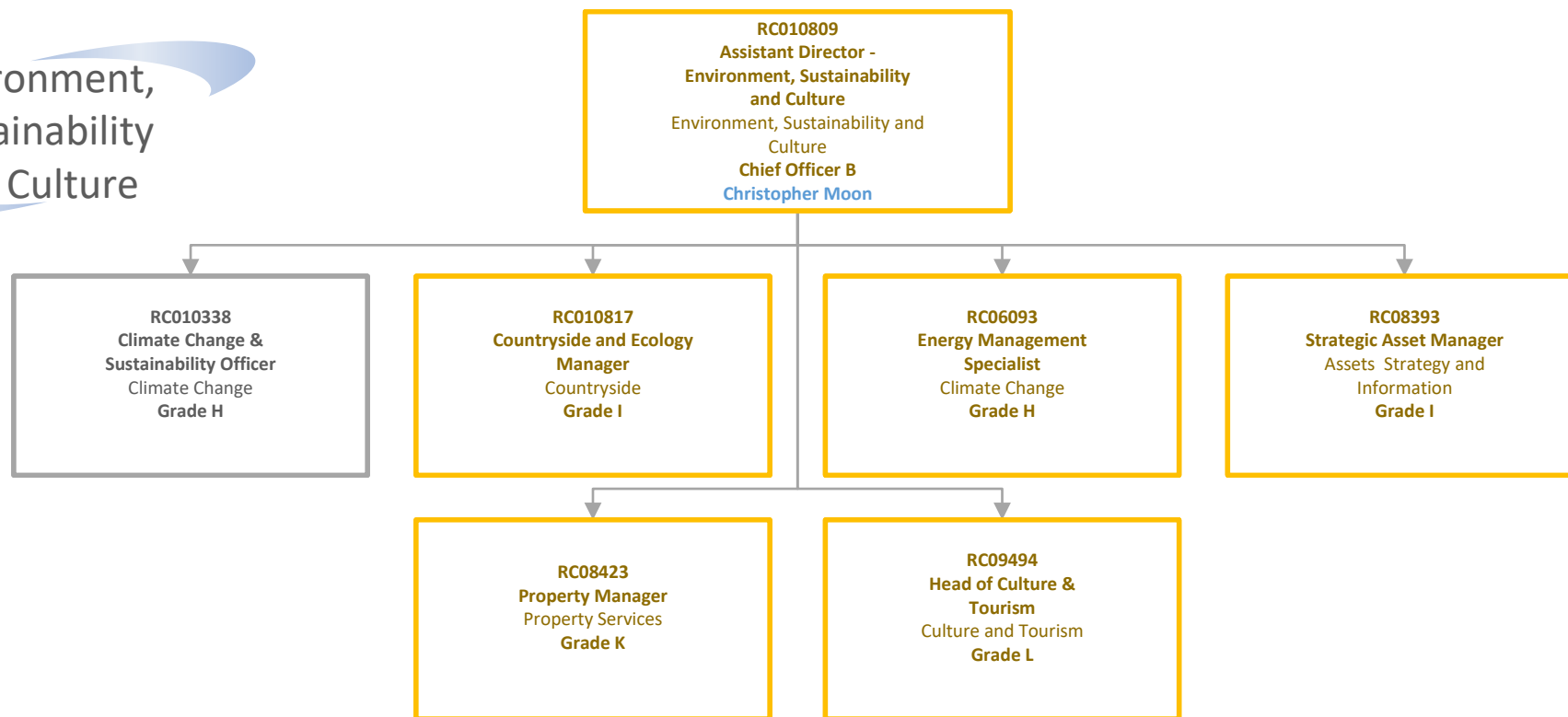


<b>Pay Grades &amp; Salaries 2024-25</b>			
<b>T&amp;C's</b>	<b>Grade</b>	<b>Salary From</b>	<b>Salary To</b>
<b>JNC</b>	<b>Head of Paid Services</b>	£ 151,408.00	£ 151,408.00
	<b>Director 1</b>	£ 139,111.00	£ 139,111.00
	<b>Director 3</b>	£ 119,635.00	£ 119,635.00
	<b>Chief Officer B</b>	£ 92,663.00	£ 92,663.00
	<b>Chief Officer C</b>	£ 83,601.00	£ 83,601.00
<b>NJC</b>	<b>Grade N</b>	£ 77,624.00	£ 80,692.00
	<b>Grade L</b>	£ 64,059.00	£ 66,568.00
	<b>Grade K</b>	£ 58,216.00	£ 60,478.00
	<b>Grade J+</b>	£ 54,977.00	£ 57,117.00
	<b>Grade J</b>	£ 52,805.00	£ 54,977.00
	<b>Grade I+</b>	£ 49,764.00	£ 51,802.00



<b>Pay Grades &amp; Salaries 2024-25</b>			
<b>T&amp;C's</b>	<b>Grade</b>	<b>Salary From</b>	<b>Salary To</b>
<b>JNC</b>	<b>Head of Paid Services</b>	£ 151,408.00	£ 151,408.00
	<b>Director 1</b>	£ 139,111.00	£ 139,111.00
	<b>Director 3</b>	£ 119,635.00	£ 119,635.00
	<b>Chief Officer B</b>	£ 92,663.00	£ 92,663.00
	<b>Chief Officer C</b>	£ 83,601.00	£ 83,601.00
<b>NJC</b>	<b>Grade N</b>	£ 77,624.00	£ 80,692.00
	<b>Grade L</b>	£ 64,059.00	£ 66,568.00
	<b>Grade K</b>	£ 58,216.00	£ 60,478.00
	<b>Grade J+</b>	£ 54,977.00	£ 57,117.00
	<b>Grade J</b>	£ 52,805.00	£ 54,977.00
	<b>Grade I+</b>	£ 49,764.00	£ 51,802.00

# Environment, Sustainability and Culture

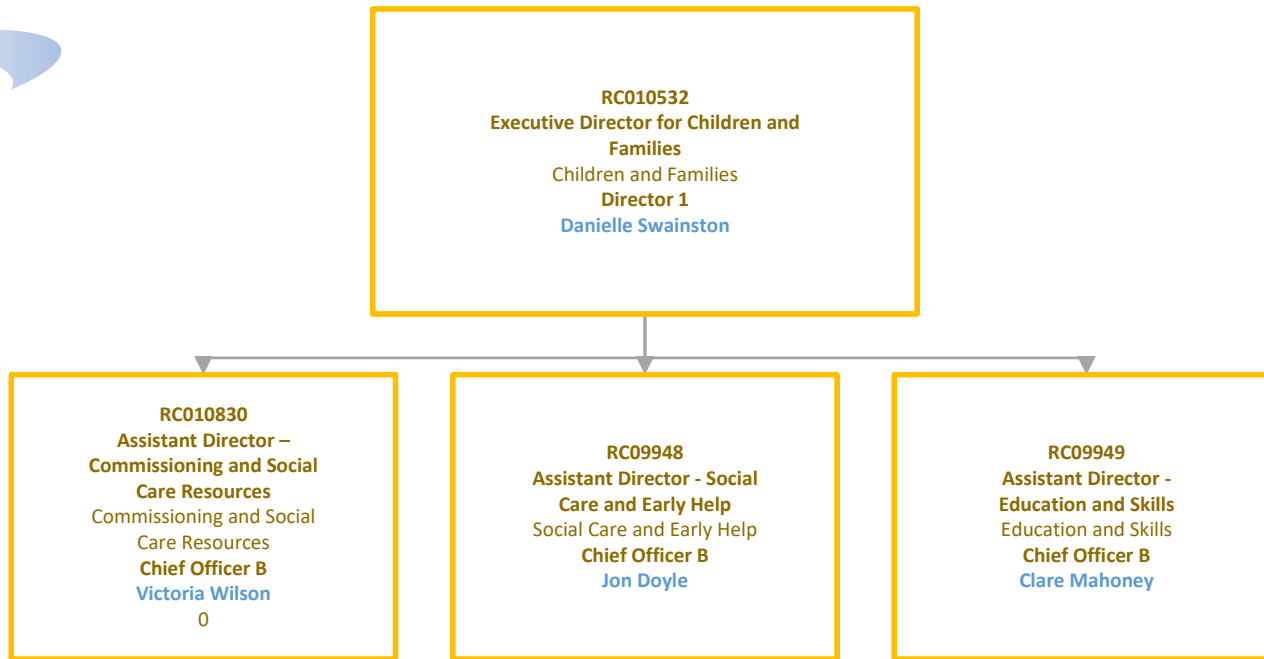


Pay Grades & Salaries 2024-25			
T&C's	Grade	Salary From	Salary To
JNC	Head of Paid Services	£ 151,408.00	£ 151,408.00
	Director 1	£ 139,111.00	£ 139,111.00
	Director 3	£ 119,635.00	£ 119,635.00
	Chief Officer B	£ 92,663.00	£ 92,663.00
	Chief Officer C	£ 83,601.00	£ 83,601.00
NJC	Grade N	£ 77,624.00	£ 80,692.00
	Grade L	£ 64,059.00	£ 66,568.00
	Grade K	£ 58,216.00	£ 60,478.00
	Grade J+	£ 54,977.00	£ 57,117.00
	Grade J	£ 52,805.00	£ 54,977.00
	Grade I+	£ 49,764.00	£ 51,802.00





Children and Families



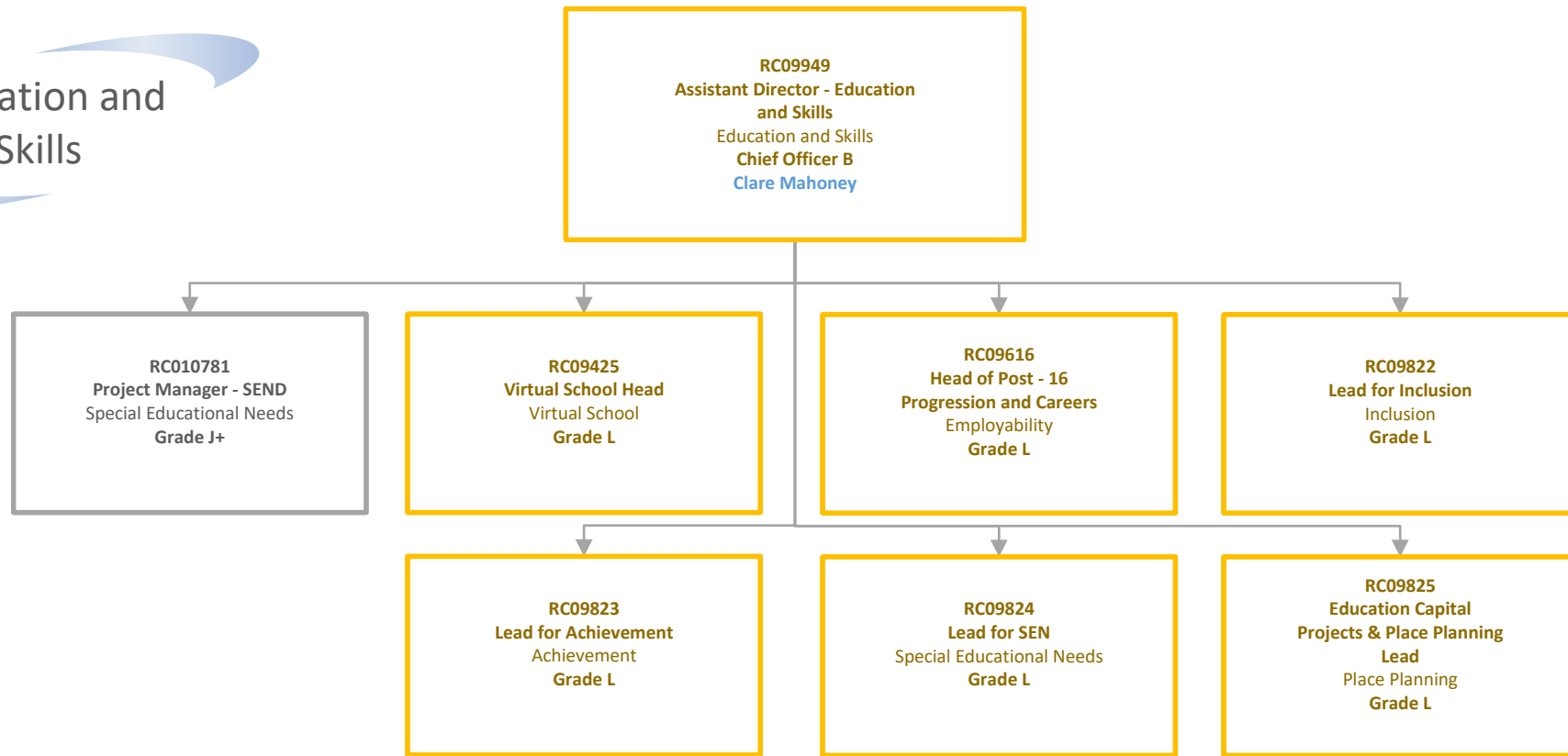
<u>Pay Grades &amp; Salaries 2024-25</u>			
T&C's	Grade	Salary From	Salary To
JNC	Head of Paid Services	£ 151,408.00	£ 151,408.00
	Director 1	£ 139,111.00	£ 139,111.00
	Director 3	£ 119,635.00	£ 119,635.00
	Chief Officer B	£ 92,663.00	£ 92,663.00
	Chief Officer C	£ 83,601.00	£ 83,601.00
NJC	Grade N	£ 77,624.00	£ 80,692.00
	Grade L	£ 64,059.00	£ 66,568.00
	Grade K	£ 58,216.00	£ 60,478.00
	Grade J+	£ 54,977.00	£ 57,117.00
	Grade J	£ 52,805.00	£ 54,977.00
	Grade I+	£ 49,764.00	£ 51,802.00

# Social Care and Early Help



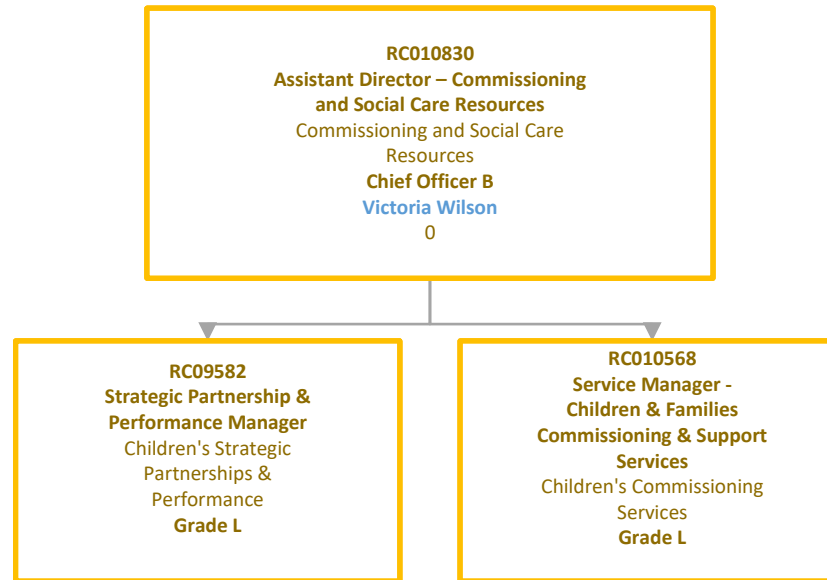
Pay Grades & Salaries 2024-25			
T&C's	Grade	Salary From	Salary To
JNC	Head of Paid Services	£ 151,408.00	£ 151,408.00
	Director 1	£ 139,111.00	£ 139,111.00
	Director 3	£ 119,635.00	£ 119,635.00
	Chief Officer B	£ 92,663.00	£ 92,663.00
	Chief Officer C	£ 83,601.00	£ 83,601.00
NJC	Grade N	£ 77,624.00	£ 80,692.00
	Grade L	£ 64,059.00	£ 66,568.00
	Grade K	£ 58,216.00	£ 60,478.00
	Grade J+	£ 54,977.00	£ 57,117.00
	Grade J	£ 52,805.00	£ 54,977.00
	Grade I+	£ 49,764.00	£ 51,802.00

# Education and Skills



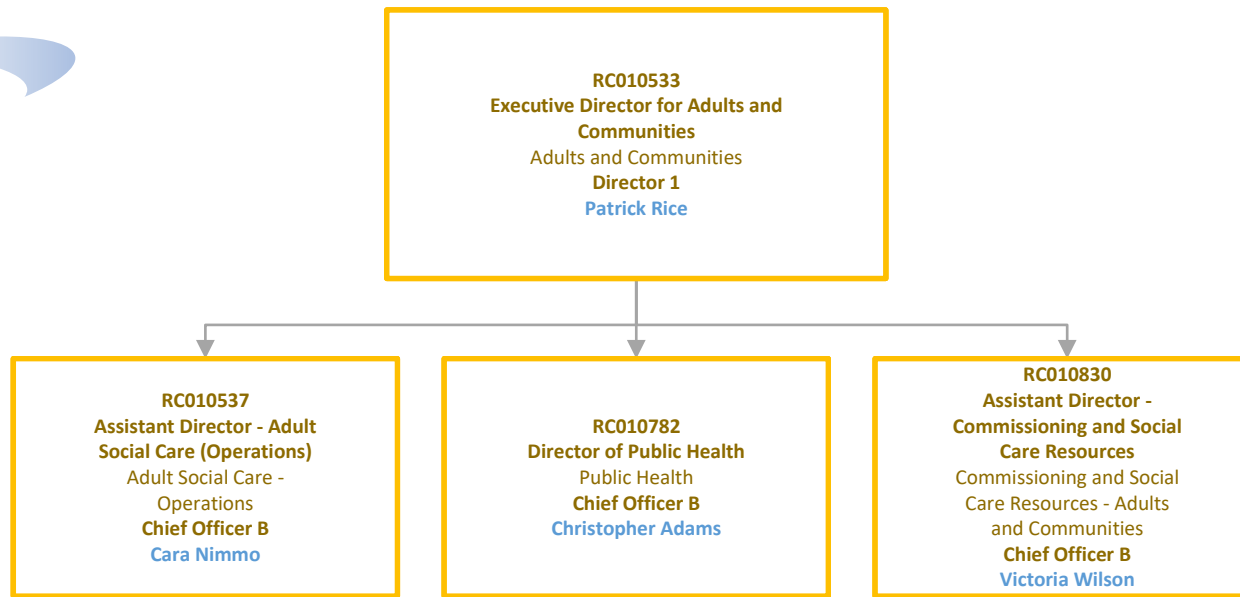
Pay Grades & Salaries 2024-25			
T&C's	Grade	Salary From	Salary To
JNC	Head of Paid Services	£ 151,408.00	£ 151,408.00
	Director 1	£ 139,111.00	£ 139,111.00
	Director 3	£ 119,635.00	£ 119,635.00
	Chief Officer B	£ 92,663.00	£ 92,663.00
	Chief Officer C	£ 83,601.00	£ 83,601.00
NJC	Grade N	£ 77,624.00	£ 80,692.00
	Grade L	£ 64,059.00	£ 66,568.00
	Grade K	£ 58,216.00	£ 60,478.00
	Grade J+	£ 54,977.00	£ 57,117.00
	Grade J	£ 52,805.00	£ 54,977.00
	Grade I+	£ 49,764.00	£ 51,802.00

Commissioning  
and Social Care  
Resources -  
Children and  
Families



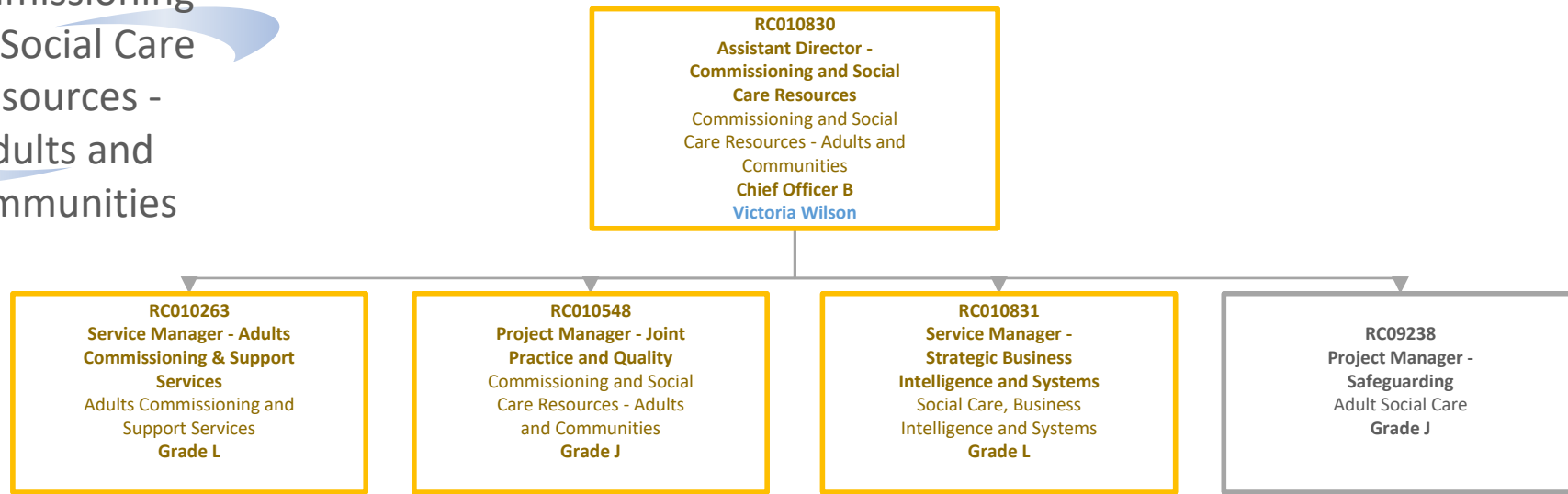
<b>Pay Grades &amp; Salaries 2024-25</b>			
<b>T&amp;C's</b>	<b>Grade</b>	<b>Salary From</b>	<b>Salary To</b>
<b>JNC</b>	<b>Head of Paid Services</b>	£ 151,408.00	£ 151,408.00
	<b>Director 1</b>	£ 139,111.00	£ 139,111.00
	<b>Director 3</b>	£ 119,635.00	£ 119,635.00
	<b>Chief Officer B</b>	£ 92,663.00	£ 92,663.00
	<b>Chief Officer C</b>	£ 83,601.00	£ 83,601.00
<b>NJC</b>	<b>Grade N</b>	£ 77,624.00	£ 80,692.00
	<b>Grade L</b>	£ 64,059.00	£ 66,568.00
	<b>Grade K</b>	£ 58,216.00	£ 60,478.00
	<b>Grade J+</b>	£ 54,977.00	£ 57,117.00
	<b>Grade J</b>	£ 52,805.00	£ 54,977.00
	<b>Grade I+</b>	£ 49,764.00	£ 51,802.00

# Adults and Communities



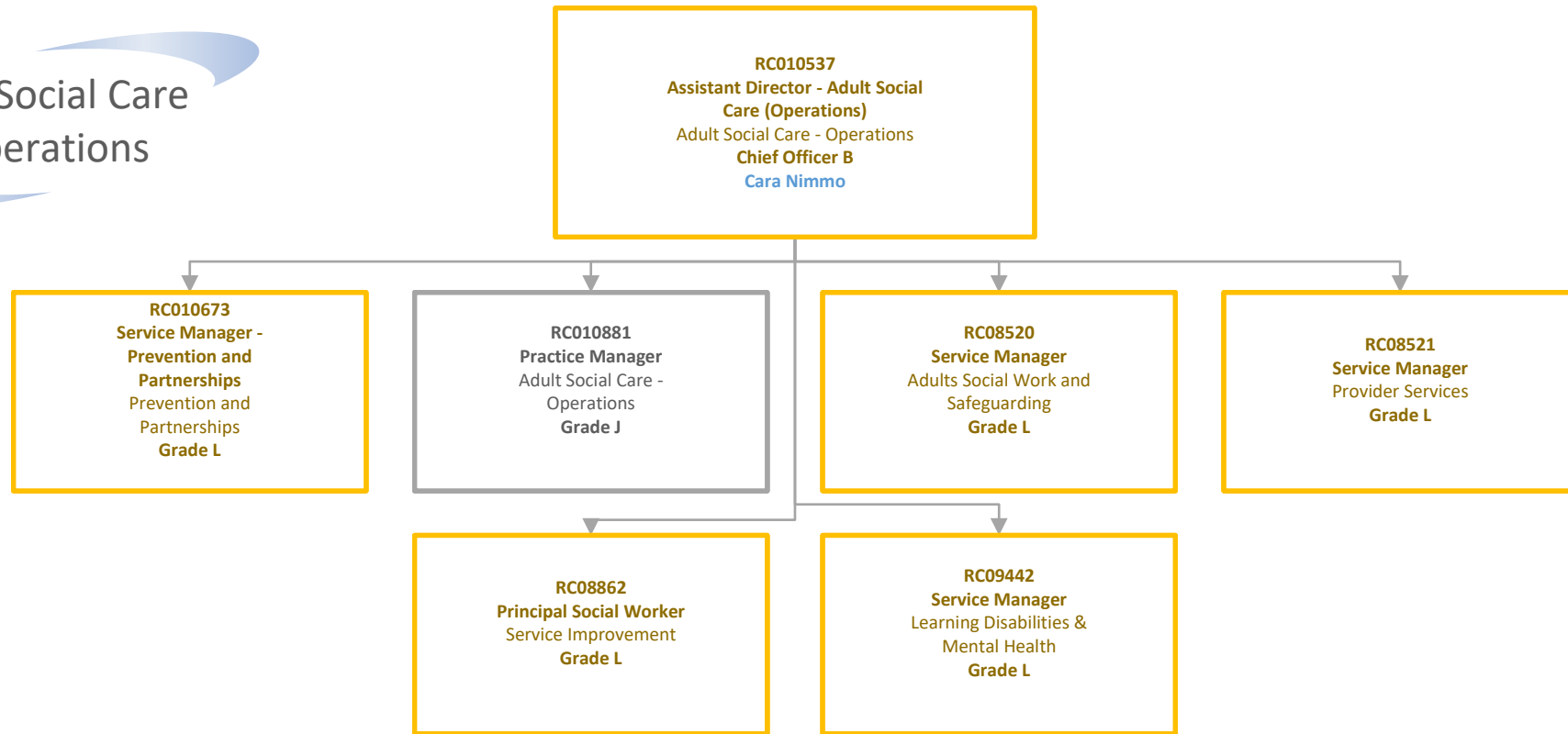
<u>Pay Grades &amp; Salaries 2024-25</u>			
T&C's	Grade	Salary From	Salary To
JNC	Head of Paid Services	£ 151,408.00	£ 151,408.00
	Director 1	£ 139,111.00	£ 139,111.00
	Director 3	£ 119,635.00	£ 119,635.00
	Chief Officer B	£ 92,663.00	£ 92,663.00
	Chief Officer C	£ 83,601.00	£ 83,601.00
NJC	Grade N	£ 77,624.00	£ 80,692.00
	Grade L	£ 64,059.00	£ 66,568.00
	Grade K	£ 58,216.00	£ 60,478.00
	Grade J+	£ 54,977.00	£ 57,117.00
	Grade J	£ 52,805.00	£ 54,977.00
	Grade I+	£ 49,764.00	£ 51,802.00

# Commissioning and Social Care Resources - Adults and Communities



<b>Pay Grades &amp; Salaries 2024-25</b>			
<b>T&amp;C's</b>	<b>Grade</b>	<b>Salary From</b>	<b>Salary To</b>
<b>JNC</b>	<b>Head of Paid Services</b>	£ 151,408.00	£ 151,408.00
	<b>Director 1</b>	£ 139,111.00	£ 139,111.00
	<b>Director 3</b>	£ 119,635.00	£ 119,635.00
	<b>Chief Officer B</b>	£ 92,663.00	£ 92,663.00
	<b>Chief Officer C</b>	£ 83,601.00	£ 83,601.00
<b>NJC</b>	<b>Grade N</b>	£ 77,624.00	£ 80,692.00
	<b>Grade L</b>	£ 64,059.00	£ 66,568.00
	<b>Grade K</b>	£ 58,216.00	£ 60,478.00
	<b>Grade J+</b>	£ 54,977.00	£ 57,117.00
	<b>Grade J</b>	£ 52,805.00	£ 54,977.00
	<b>Grade I+</b>	£ 49,764.00	£ 51,802.00

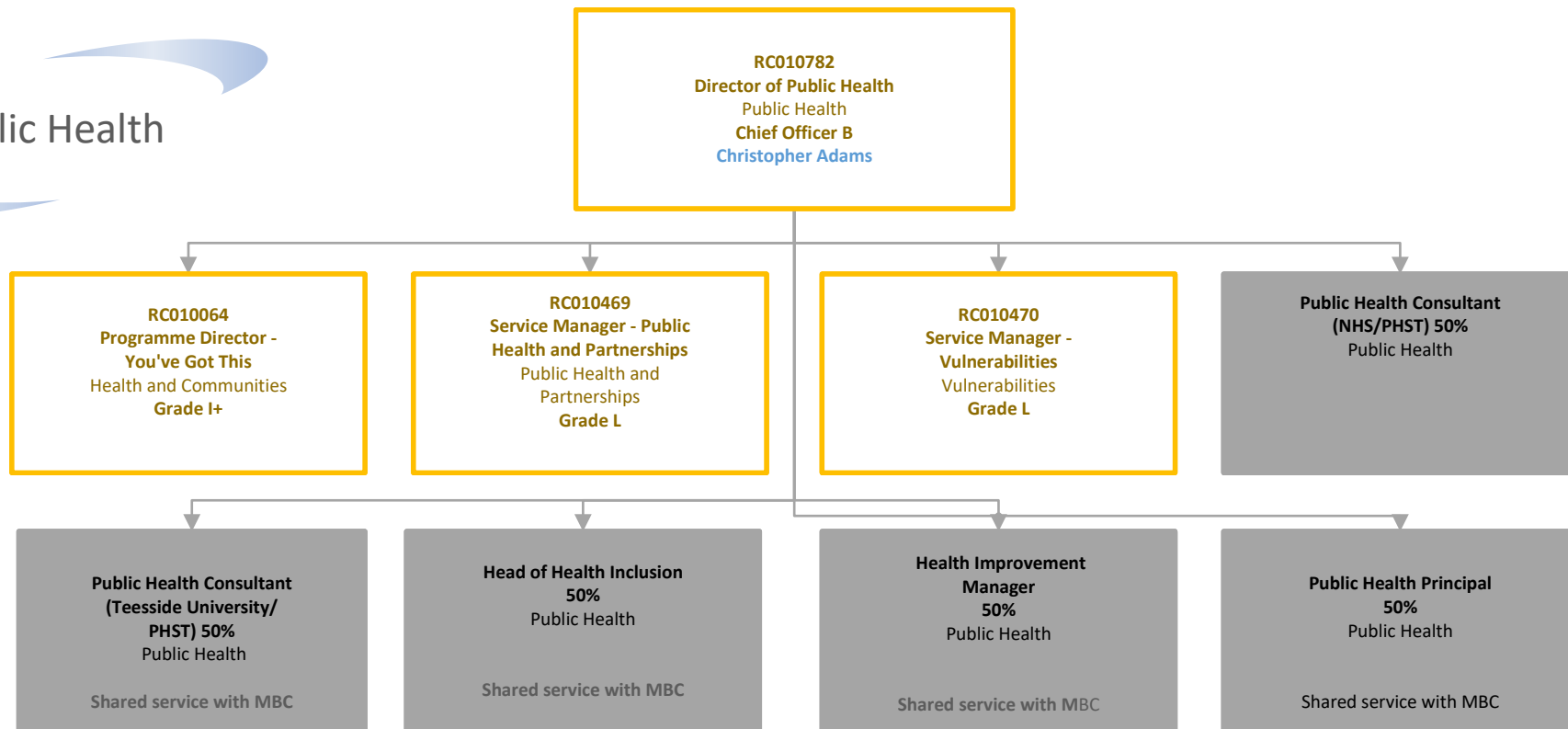
# Adult Social Care - Operations



Pay Grades & Salaries 2024-25			
T&C's	Grade	Salary From	Salary To
JNC	Head of Paid Services	£ 151,408.00	£ 151,408.00
	Director 1	£ 139,111.00	£ 139,111.00
	Director 3	£ 119,635.00	£ 119,635.00
	Chief Officer B	£ 92,663.00	£ 92,663.00
	Chief Officer C	£ 83,601.00	£ 83,601.00
NJC	Grade N	£ 77,624.00	£ 80,692.00
	Grade L	£ 64,059.00	£ 66,568.00
	Grade K	£ 58,216.00	£ 60,478.00
	Grade J+	£ 54,977.00	£ 57,117.00
	Grade J	£ 52,805.00	£ 54,977.00
	Grade I+	£ 49,764.00	£ 51,802.00



# Public Health



<b>Pay Grades &amp; Salaries 2024-25</b>			
<b>T&amp;C's</b>	<b>Grade</b>	<b>Salary From</b>	<b>Salary To</b>
<b>JNC</b>	<b>Head of Paid Services</b>	£ 151,408.00	£ 151,408.00
	<b>Director 1</b>	£ 139,111.00	£ 139,111.00
	<b>Director 3</b>	£ 119,635.00	£ 119,635.00
	<b>Chief Officer B</b>	£ 92,663.00	£ 92,663.00
	<b>Chief Officer C</b>	£ 83,601.00	£ 83,601.00
<b>NJC</b>	<b>Grade N</b>	£ 77,624.00	£ 80,692.00
	<b>Grade L</b>	£ 64,059.00	£ 66,568.00
	<b>Grade K</b>	£ 58,216.00	£ 60,478.00
	<b>Grade J+</b>	£ 54,977.00	£ 57,117.00
	<b>Grade J</b>	£ 52,805.00	£ 54,977.00
	<b>Grade I+</b>	£ 49,764.00	£ 51,802.00





# Salaries

<b>Pay Grades &amp; Salaries 2024-25</b>			
<b>T&amp;C's</b>	<b>Grade</b>	<b>Salary From</b>	<b>Salary To</b>
<b>JNC</b>	<b>Head of Paid Services</b>	£ 151,408.00	£ 151,408.00
	<b>Director 1</b>	£ 139,111.00	£ 139,111.00
	<b>Director 3</b>	£ 119,635.00	£ 119,635.00
	<b>Chief Officer B</b>	£ 92,663.00	£ 92,663.00
	<b>Chief Officer C</b>	£ 83,601.00	£ 83,601.00
<b>NJC</b>	<b>Grade N</b>	£ 77,624.00	£ 80,692.00
	<b>Grade L</b>	£ 64,059.00	£ 66,568.00
	<b>Grade K</b>	£ 58,216.00	£ 60,478.00
	<b>Grade J+</b>	£ 54,977.00	£ 57,117.00
	<b>Grade J</b>	£ 52,805.00	£ 54,977.00
	<b>Grade I+</b>	£ 49,764.00	£ 51,802.00