

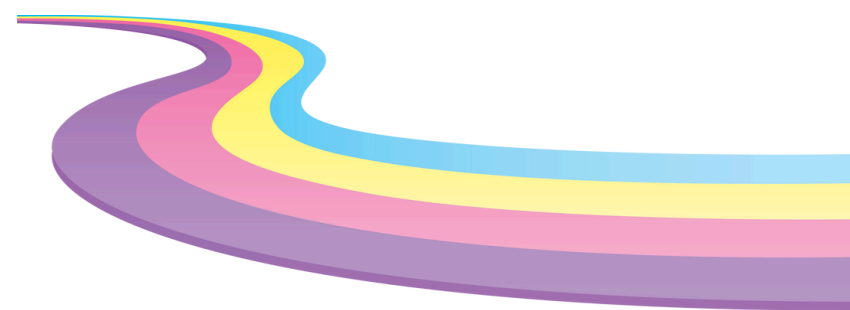


In partnership with  
**Speech and Language UK**  
Changing young lives.



# Integrated Speech, Language and Communication Pathway

Universal,  
Targeted,  
and Specialist



## Introduction

Every child, regardless of circumstance should be able to develop and thrive. There is increasing concern about the number of children starting school with poor speech, language and communication skills, with unacceptable differences in outcomes in different areas of the country. Inequalities in early language development are recognisable in the second year of life and have an impact by the time children enter school.

Speech, language and communication skills are crucial to children and young people's overall development. Being able to speak clearly and process speech sounds, understand others, express ideas and interact with others are fundamental building blocks for a child's development. Research suggests that good communication, language and literacy at a young age have the highest correlation with outcomes at school and because of this Redcar and Cleveland Local Authority in Partnership with South Tees Talks have developed an Early Language Strategy. This includes a pathway showing how professionals will work together to support Speech, Language and Communication (SLC) from birth to 5 years across Redcar and Cleveland and is underpinned by training for the wider workforce to support this.



Where you see this symbol please help us to share key Speech, Language and Communication messages directly with families.



## For Everyone



### 0-2 Years

Family Hub Assistants to complete a new birth call to new parents/carers. They will introduce and explain Family Hubs services, and support and register the family with the Family Hubs.

- Promote attendance at Family Hubs sessions and engagement with the digital Family Hubs offer/app.

Encourage parents to register their child with the library and promote early years sessions provided by the library service.

### 2-4 Years

- Share with parents/carers that there is a Speech and Language Therapist (SALT) based in the Family Hubs. To receive advice and guidance or book a slot, call: 01642 770810.

Promote attendance at Family Hubs sessions and engagement with the digital Family Hubs offer/app.

## By Invitation



### 0-2 Years

Promote attendance at Family Hubs sessions and engagement with the digital Family Hubs offer/app.

- Consider referral into Chat, Sing and Read for additional support.

### 2-3 Years

Ensure parents/carers are aware that their child may be eligible for 15 hours free childcare.

- Share with parents/carers that there is a SALT based in the Family Hubs. To receive advice and guidance or book a slot, call: 01642 770810.
- Consider referral into Wriggle, Read and Rhyme for additional support.

## Referral



### 0-2 Years

Promote R&C SEND offer, attendance at Family Hubs sessions and engagement with the digital Family Hubs offer/app.

### 3-5 Years

- SENDCOs at Early Years setting to have oversight of the S&L progress of the child.

